

AMPEX

CORPORATION

MAGNETIC RECORDERS

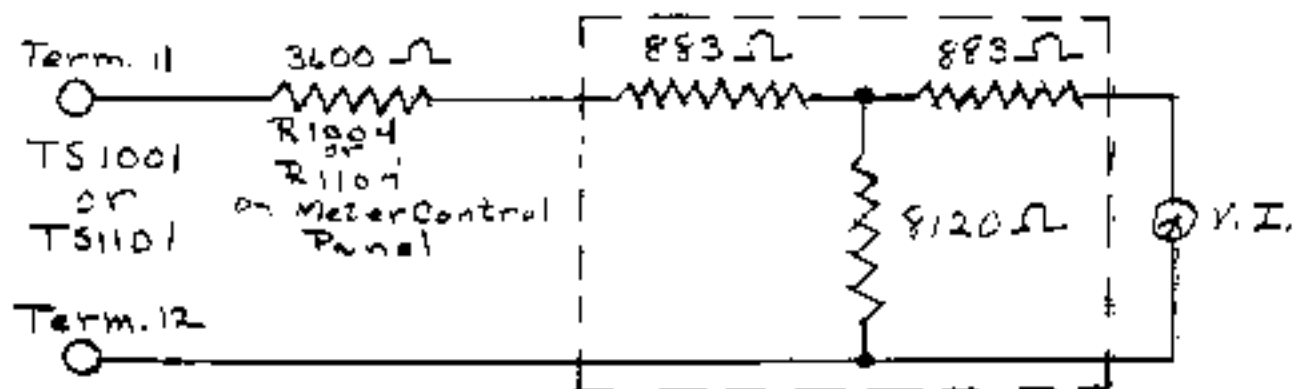
SERVICE BULLETIN

934 CHARTER ST. - EMERSON 8-1471
 7 W X REDWOOD CITY CAL 41
 CABLE ADDRESS: AMPEX, REDWOOD CITY
 REDWOOD CITY, CALIFORNIA

DATE: 20 March 1953
 MODEL: 300
 BULLETIN NO: 13
 PAGE NO: 1

1. Adjusting Levels. In the event that it is desired to operate the recorders at levels other than the recommended levels of ± 1 VU in and out, the procedure is as follows:

- I. A. To set new playback level on machines without Meter Control Panel (assuming machine has already been adjusted in accordance with the procedure outlined in the Instruction Book)
 - (1) Thread up and play standard tape.
 - (2) On playback of 1000 cycle tone, adjust playback gain control R213 so that output reads 10 db below new desired operating level, but not over 0 dbm.
- B. To set new playback level on machines with Meter Control Panel (matching or bridging)
 - (1) Thread up and play standard tape.
 - (2) Place playback level control at 11.
 - (3) Adjust R213 on Meter Control Panel so that 1000 cycle tone plays back at new desired operating level (not over ± 10 dbm)
 - (4) If new level is greater than ± 4 VU insert pad between playback output and VI meter on Meter Control Panel so that meter reads zero at new output level. If new output level is ± 8 VU then use pad as shown in Figure 1 below.



- (5) Set playback level control to 11, for normal operation.

II. A. Machines without Meter Control Panel:

- (1) Feed recorder with new desired operating level.
- (2) Adjust record level control R101 until operating level is obtained on playback.

AMPEX

CORPORATION

934 CHARTER ST. • EMERSON 8-1471
7 W X REDWOOD CITY CAL 41
CABLE ADDRESS: AMPEX, REDWOOD CITY
REDWOOD CITY, CALIFORNIA

MAGNETIC RECORDERS

SERVICE BULLETIN

DATE: 20 March 1953

MODEL: 300

BULLETIN NO. 13

PAGE NO. 2

B. Machines with Meter Control Panel:

Record Level Step control on Meter Control Panel provides accommodation for various input levels. Adjust this control until output of playback is normal operating level.